



# TAX & TAG TIPS

From

Denise R. Mitchell, MPA  
Tax Commissioner



## Did you recently change the name on your property to a trust?

***If the answer is YES, be careful not to lose your homestead exemption.***

**How could this happen?** Even when you still reside at the property, transferring a deed resets the property in the system as if there is a new owner in the home. Therefore, you must reapply.

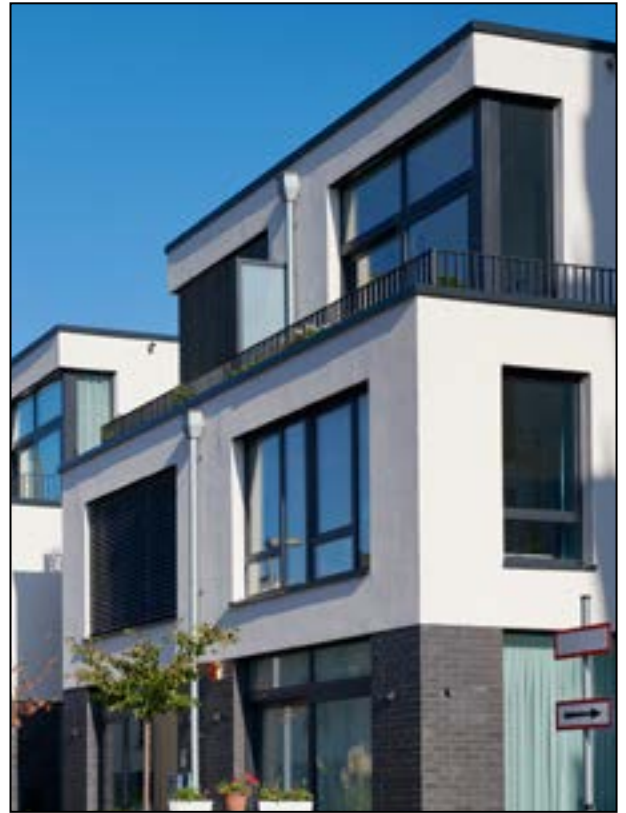
To qualify for the homestead exemption, the following criteria must be met:

- Be a beneficiary of the trust
- Occupy the home as your primary residence
- Meet all legal homestead requirements

A trustee or grantor will not qualify unless they are also a beneficiary of the trust.

To see the savings on your 2025 property tax bill, **you must apply by the April 1, 2025 deadline.**

For more information and to apply, visit [www.GwinnettTaxCommissioner.com/Exemptions](http://www.GwinnettTaxCommissioner.com/Exemptions).



**Best regards,**



[www.GwinnettTaxCommissioner.com](http://www.GwinnettTaxCommissioner.com)

I want to help you conduct your tax and tag business with ease. Send your questions or suggestions to [TaxCommissioner@gwinnettcountry.com](mailto:TaxCommissioner@gwinnettcountry.com).

# EMISSIONS TIP FOR SENIORS

Are you 65 years of age or older and own a car that is at least 10 years old?

If you answered yes, you may qualify for the Senior Emissions Waiver. The waiver eliminates the emissions test for a tag renewal if you drive the vehicle no more than 5,000 miles annually.

You can complete the waiver online at [CleanAirForce.com](http://CleanAirForce.com). We can also assist you with the application in a tag office or over the phone at 770-822-8818.

For additional information and to apply for other senior savings offered by your tax commissioner's office, visit our website at [www.GwinnettTaxCommissioner.com/Seniors](http://www.GwinnettTaxCommissioner.com/Seniors).



# SAVE MONEY ON NEXT YEAR'S PROPERTY TAX BILL

*Apply for a homestead exemption!*

The best way to reduce your property tax bill is to apply for a homestead exemption. You are likely eligible if you own and occupy your home as your primary residence on or before January 1. Apply by April 1 to start seeing savings on that year's bill.

Applying online is quick and easy! For more information and to apply, visit [www.GwinnettTaxCommissioner.com/Exemptions](http://www.GwinnettTaxCommissioner.com/Exemptions).



## We're Here to Help!

Customer Service Agents available 8 a.m. - 5 p.m. weekdays.

Property Tax: [tax@gwinnettcountry.com](mailto:tax@gwinnettcountry.com) • 770-822-8800  
Motor Vehicles: [tag@gwinnettcountry.com](mailto:tag@gwinnettcountry.com) • 770-822-8818  
Chat with us at [www.GwinnettTaxCommissioner.com](http://www.GwinnettTaxCommissioner.com).



### Tag Office Hours

MON • TUE • THU • FRI	WED
8:30 - 5:30	8:30 - 6:00